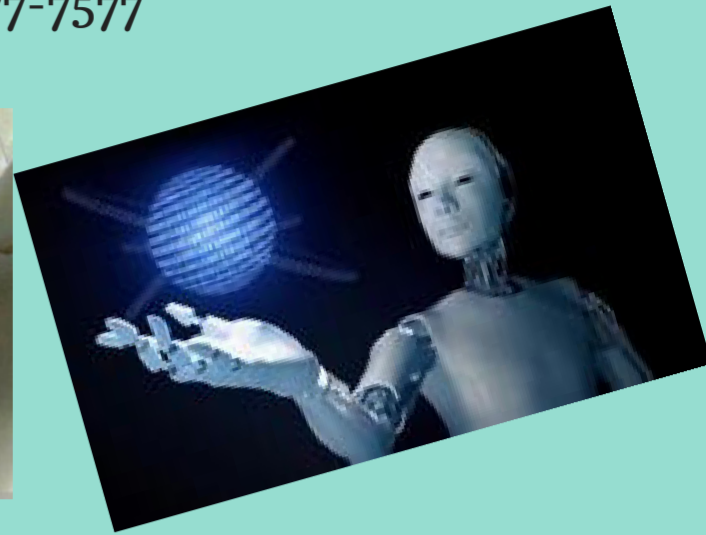
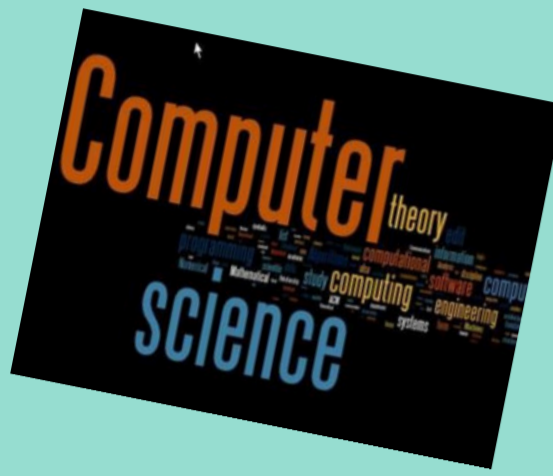


2017 International Conference on Computer Science and Artificial Intelligence

December 5-7, 2017 at HARRIS Hotel & Conventions Kelapa Gading - Jakarta, Indonesia

Web: www.csai.org E-mail: csai@young.ac.cn Tel: +86-28-8777-7577



PUBLICATION

Accepted papers will be included in the conference proceedings, which will be published with International Conference Proceedings Series by ACM and be indexed by Ei Compendex and reviewed by Scopus.

Topics

Computer Architecture
Computer Networks
Computer Vision
Methods and Techniques for Software Development
Computational and Artificial Intelligence
Data Communication and Networking
Embedded systems
Knowledge Management
Mining Data, Text, and the Web
Mobile computing
Distributed Computing and Cooperative Computing
Artificial Intelligence and Intelligent Computing
Semantic Analysis and Knowledge Engineering

Multimedia DB's
Advanced Database
Artificial Intelligence
Networks and Systems
Operating Systems
Signal Processing
Data Management
Data Mining
Big data and Cloud Computing
Parallel and Distributed Computing
Big Data and Intelligent Computing
Machine Learning and Pattern Recognition
Computational Thinking and Education Analysis
Reconfigurable computing Sensor networks



KEYNOTE SPEAKERS

Prof. Hossein Sarrafzadeh
Unitec Institute of Technology, New Zealand

Prof. Nabil EL KADHI
University of Buraimi, Sultanate of Oman

Prof. Shihab A. Hameed
IIUM University Malaysia, Malaysia

Dr. Eko K. Budiardjo
University of Indonesia, Indonesia

JAKARTA ATTRACTIONS

Jakarta is nicknamed the Big Durian, the thorny strongly-odored fruit native to the region as the city is seen as the Indonesian equivalent of the US city of New York (the Big Apple). In the colonial era, the city was also known as Koningin van het Oosten (Queen of the Orient), initially in the 17th century for the urban beauty of downtown Batavia's canals, mansions and ordered city layout. After expanding to the south in the 19th century, this nickname came to be more associated with the suburbs (e.g. Menteng and the area around Merdeka Square), with their wide lanes, many green spaces and villas.



Managed by BINA NUSANTARA